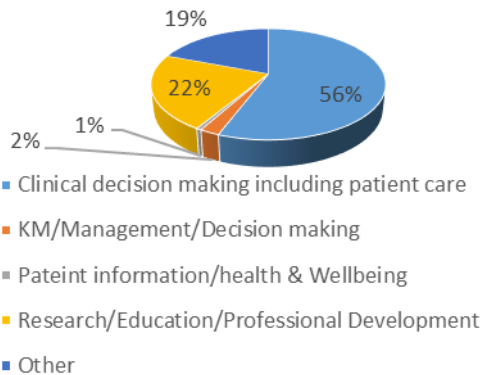


Patricia Bowen Library & Knowledge Service - Annual Report 2023-2024

Evidence Searches

- ✓ 100% respondents indicated that information was supplied on time
- ✓ 100% happy with the results

Purpose of Evidence searches



To meet the growing need for library services to be delivered at the point of care, we offer **Clinical and outreach librarians' services** at Women's Health & Maternity Unit. Repository of search questions and search results are available [online](#) for easy access

Activity



217 new users



397 articles supplied 4106 books loaned



4890 enquires answered and responded



190 literature searches conducted



Sourced and delivered 306 articles



Added 462 staff publications to the repository



Delivered 57 training sessions

Service Provision

Role and Mission:

The main role of Patricia Bowen Library & Knowledge Service is to facilitate knowledge sharing in delivering high quality health services.

The mission is to positively contribute to the health of the community by providing current, comprehensive, quality, accessible and timely information for all our users.

Library and knowledge services are currently provided to: Chelsea & Westminster Hospital staff, Trainee doctors, Medical and Nursing and other students on placement at the Trust.

We are guided by our values, which are **PROUD***

- We are Passionate about providing library services to Trust staff to provide excellent patient care
- We are Responsive and supportive of all information requests by staff
- We are welcoming and open to any suggestions to improve the library services for better patient care
- Library staff are Unfailingly kind and treat all library users with respect
- Library staff are determined and dedicated to develop new skills and use their expertise to help Trust staff for excellent patient care.

Achievements

- Outcomes Frame work validated levels achieved as level 1 medium – Level 2 high. This is on or above national average.
- The validators have identified innovative and good practice against some outcomes
- Reviewed the recommended actions from the Quality Outcomes Framework report, submitted development plan with steps to resolve and participated in development plan conversations.
- Prepared joint strategy for QIOF submission
- Increased health literacy awareness training sessions
- Reviewed online resources and renewed
- Increased health literacy awareness training sessions to improve health literacy awareness for staff.
- Statistics dashboard created and uploaded on the website
- Submitted impact case studies
- Onexamination and Pass medicine codes distributed to trainees

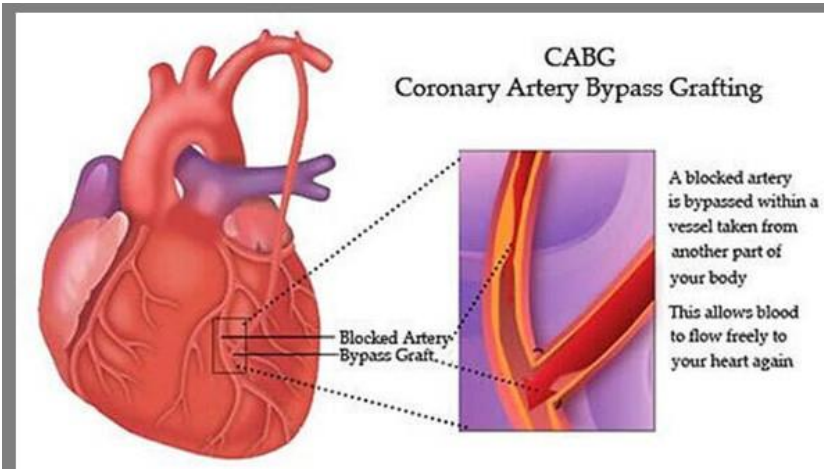
Going forward: priorities

- Submit the Quality and Improvement Outcomes Framework focussing on continuous improvement and identify opportunities to streamline and improve services
- Proactively take forward Health literacy and Knowledge mobilisation activities
- Continue compiling and adding the staff publications lists and add them to the repository
- Continue catalogue Grand Rounds and upload the presentations
- Continue developing innovative ways to deliver our service and engage with our users through the use of new platforms and technologies.
- Expand our support for Trust wide objectives and knowledge management initiatives
- Work with Imperial Library team at Chelsea site
- Explore options to integrate knowledge hub and OpenAthens as one organisation
- Proactively Promote resources
- Support Trust teams at all levels to manage knowledge, deliver the highest quality of care through evidence-based practice

From the feedback we get from our users, the Library services we provide are much valued and we are **proud** that we support evidence based decision making that has a direct impact on our patients.

Impact of Our Services

To demonstrate the value and impact of our services, we continue to actively collect case studies and submit to NHSE Knowledge and Library Services. All the [submitted case studies](#) are available on the library website. Below case study vignettes outline examples of impact case studies accepted in 2023-24.



CABG - Patient Information Leaflet

The library conducted an evidence search and identified examples of good practice from elsewhere and sourced information from NHS, BHF and other trusted websites and put together the leaflet using the Trust patient Information leaflet template.

The leaflet has been refined through close working with Cath lab team. Librarian then printed the leaflets and displayed them in the Cath lab along with other BHF booklets for patients to pick them up. The information is based on accepted scientific evidence and national guidelines.

“The leaflet compiled by the library manager and approved by Cardiac Catheter Lab team provide assurance for our patients that they can access the right information, which is evidence based”.



#AMillionDecisions
<https://www.hes.nhs.uk/hsa>

Evelyn Montano, Cardiac Catheter Lab Manager

Library Staff, Patricia Bowen Library & Knowledge Service

Librarians and Knowledge Specialists bring the evidence to inform healthcare decisions



Librarians and Knowledge Specialists bring the evidence to inform healthcare decisions

Development of a Screening tool for Social Determinants of Health in the Paediatric Setting

The paediatric focus group were able to pilot an evidence-based screening tool among patients attending outpatient clinic, focussing specifically on smoking, nutrition and dental visits in correlation to wider determinants of health factors. A total of 45 patients/families provided responses in the initial Phase 1 of the pilot.

As a result, clear associations between the wider determinants of health and health & lifestyle behaviours in families in the West Middlesex (Hounslow) catchment population were observed.

“ We are very grateful for the swift and forthcoming support from the library upon our request to generate a publications list (using various search terminology criteria) – several studies of which were particularly relevant to the project. ”

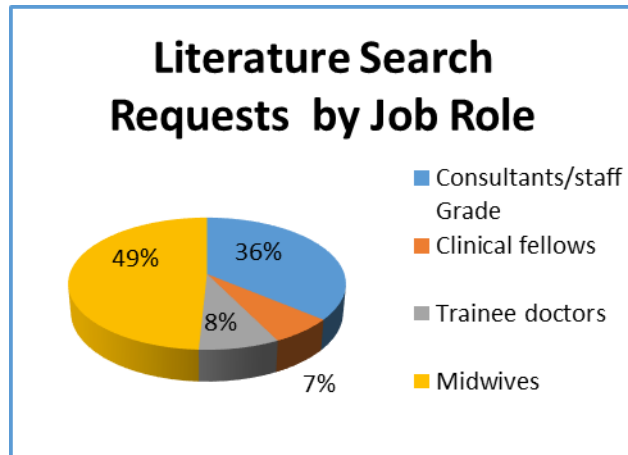
Trecina Allen
Health Improvement Programme Manager
Chelsea and Westminster Hospital NHS Foundation Trust

Patricia Bowen Library & Knowledge Service, West Middlesex Hospital,
Chelsea and Westminster Hospital NHS Foundation Trust

Impact and evaluation of Clinical Librarian Service in Obstetrics and Gynaecology/Maternity: Apr 2023 – Mar 2024

Helping clinicians find evidence

68 searches received and delivered the results same day or next day. 49% requests are from midwives 36% from consultant obstetricians, 8% from Trainee Doctors and 7% from Clinical Fellows



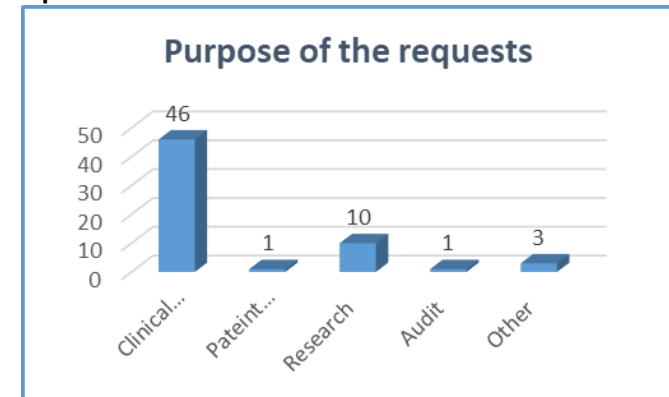
Sample searches:

1. Balloon induction in women with a previous caesarean section
2. Manual rotation for preventing instrumental delivery
3. IVF and birth at 40 weeks
4. Advanced maternal age and birth at 40 weeks
5. Manual vs automated blood pressure monitoring in pregnancy and the postpartum period
6. Safety of mifeoristone for the fetus
7. IV iron use in pregnancy
8. Ferric derisomalrose vs ferric carbocymaltose in pregnancy (including safety/side effects)
9. Renal angiomyolipoma in pregnancy
10. Cervical tears
11. Gestational diabetes and stillbirth
12. Psychological effects of postpartum haemorrhage
13. Length of Perineum and Risk of Perineal Tears and Anal Sphincter Injuries
14. Predictors of VBAC success
15. Success of induction of labour after caesarean section

We have compiled a repository of search questions and search results to make it easy for staff to access them in future, the repository can be found at:

<https://www.library.wmuh.nhs.uk/wp/library/clinical-questions-2023-24/>

Purpose of Requests:



Requests are satisfied on the same day or next day. The librarian spent total 131.85 hours to complete the requested searches.

Some Feedback comments

“Excellent service. Very quick responsive time with high quality results”

“Able to share recent evidence with a woman in order to help them to make decisions regarding breast cancer and chemotherapy during pregnancy.”

“Thank you so much, as always fast and efficient”

“Thank you - great service and prompt response. Really helpful.”

“Thanks you, would like to use it in improving patient care.”

“very useful search provided very swiftly, thank you.”

“This information will be used to create an individualised care plan to support a woman with HED’s during her labour and birth. The care plan has been created in conjunction with the lady and her midwife (myself) circulated around the MDT for critique and awareness.”